



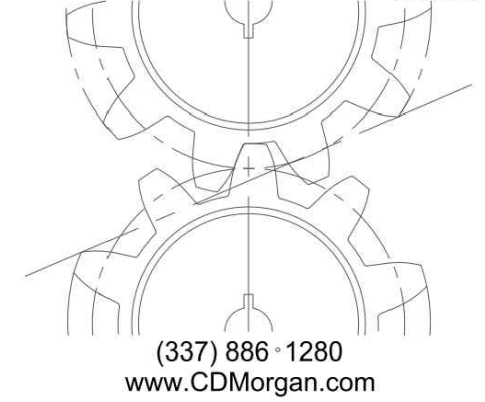
Job Title:

Office of the State
Public Defender
District 8
Office Building

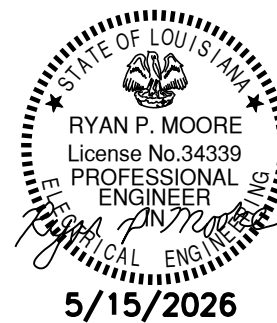
111 West Main Street
Winnfield, LA 71483

CDMorgan

& ASSOCIATES, INC.
ENGINEERING CONSULTANTS
A PROFESSIONAL ENGINEERING AND ARCHITECTURAL
CORPORATION



(337) 886-1280
www.CDMorgan.com



Seal:

May 15, 2026
Construction Documents

No.	Description	Date

KEY PLAN

1ST FLOOR LIGHTING
PLAN

Project No.: BLO001-25 Drawn By: GP

E3.1

OSPD

Sheet No.:

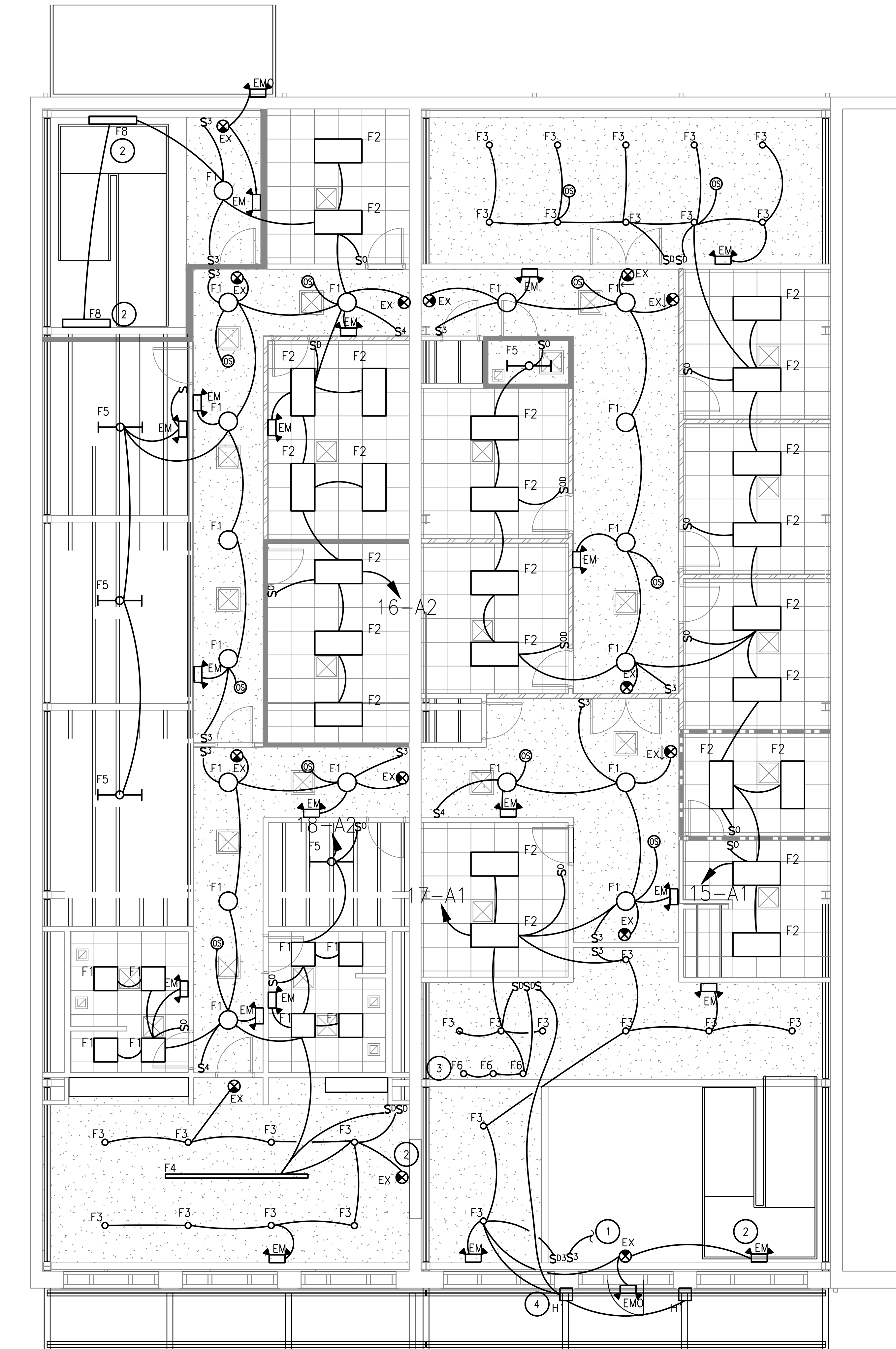
GENERAL ELECTRICAL NOTES

COORDINATE LOCATION OF ALL OUTLETS (RECEPTACLES, SWITCHES, TELECOMMUNICATION DEVICES, TV OUTLETS, ETC.) WITH FURNITURE, MILLWORK, EQUIPMENT DRAWINGS, ARCHITECTURAL ELEVATIONS PRIOR TO ROUGH-IN.

STAIRWELL FIXTURES SHALL BE UNSWITCHED (TYPE F8)

KEYNOTES

1. UP TO 2ND FLOOR LIGHTING.
2. CONFIRM LOCATION WITH ARCHITECT.
3. COORDINATE LOCATION OF LIGHTING FIXTURES AT ENTRY DESK WITH ARCHITECT PRIOR TO ROUGH-IN. RELOCATE AS REQUIRED BY ARCHITECT.
4. ROUTE OUTDOOR FIXTURE CIRCUITING/SWITCHING THROUGH BUILDING MOUNTED PHOTOCELL. VERIFY EXACT LOCATION OF PHOTOCELL WITH ARCHITECT PRIOR TO ROUGH-IN.



A
E3.1
SCALE: 3/16"=1'-0"